

**[RALPH J. BUNCHE
CENTER FOR
AFRICAN AMERICAN
STUDIES AT UCLA](#)**

160 HAINES HALL,
BOX 951545
LOS ANGELES, CA
90095-1545
PH (310) 825-7403



**Special points
of interest:**

• **SAVE THE DATE:**

- ⇒ CHITJA TWALA
TUES., OCT. 3 @ 2 PM
- ⇒ BLACK CONVOCATION
TUES., OCT. 10 @ 5 PM
- ⇒ KHARY LAZARRE-WHITE
MON. OCT 16 @ 12:30 PM
- ⇒ HEATHER THOMPSON
THURS. NOV 30 @ 4 PM

• **Faculty and Staff
News**

Inside this issue:

Pg.

SAVE THE DATE—FALL 2017 EVENTS ANNOUNCED	2
Ana-Christina Ramón, Assistant Director of the Bunche Center, moves to UCLA Division of Social Sciences	3
Diversity is not a plot point—just normal for millennial New Yorkers like Peter Parker	3
Shonda Rhimes Leaves ABC for Netflix's "limitless possibilities"	3
New 2017-18 TV Shows are Mostly White and Male	3
Mammies by Betye Saar turn stereotype to power at the Craft & Folk Art Museum	4
Scholars dig into nationwide survey of post-election data at conference	4
U.S. Justice Department's plan to investigate and sue colleges over affirmative action policies	4
Library & Media Center News	5

Bunche Center News—September 2017



**A MESSAGE FROM KELLY LYTLE HERNANDEZ,
INTERIM DIRECTOR OF THE RALPH J. BUNCHE CENTER
FOR AFRICAN AMERICAN STUDIES**

Since 1969, the Ralph J. Bunche Center for African American Studies has advanced research on the history, lifestyles, and socio-cultural systems of people of African descent. Scholarship seeded by the Bunche Center has also investigated problems of distinct bearing on the psychological, social, and economic well-being of persons of African descent. And Bunche Center-affiliated faculty have consistently demonstrated how knowledge produced by and about people of African descent enriches diverse fields of study, ranging from micro-biology to musicology.

From 2001 to 2017, Professor Darnell Hunt served as Director of the Center. In these years, Professor Hunt facilitated the Center's growth while publishing path-breaking scholarship on the the entertainment industry, [Hollywood Diversity Report](#). On July 1, 2017, Professor Hunt was appointed Dean of Social Sciences.

For 2017/18, I will be serving as the Center's Interim Director. As a historian, my own scholarship has focused on race, immigration, and the carceral state (police and prison systems) in the United States. My first book, [Migra! A History of the U.S. Border Patrol](#) (University of California Press, 2010) explained how race fueled the rise of the U.S. Border Patrol in the U.S.-Mexico border region. My most recent book, [City of Inmates: Conquest, Rebellion, and the Rise of Human Caging in the United States](#) (University of North Carolina Press, 2017) chronicles how Los Angeles built the largest jail system on Earth. And my current research, [Million Dollar Hoods](#), is a digital mapping project that documents the staggering cost of incarceration in Los Angeles. It is currently being used by local advocates and policy-makers to shift public funding away from policing and incarceration and toward employment, education, and health care.

For 2017/18, I am anchoring the Million Dollar Hoods research project at the Ralph J. Bunche Center for African American Studies. From Bunche, our team of faculty, staff, students and community partners are working together to produce new knowledge to end mass incarceration in Los Angeles.

For 2017/18, the Bunche Center will also advance African American Studies at UCLA by supporting a wide range of faculty and student research on two key themes of life and struggle in the modern Black World: Work and Justice. In this endeavor, we will team with the Los Angeles Black Worker Center as well as several community partners working to transform the U.S. criminal justice system. Together, we will build upon the Bunche Center's rich history of developing and deploying Black Studies as a field of study that transforms the world in which we live.

And, as always, the Bunche Center will continue to host a wide range of events and speakers. On October, 10, 2017, at 5pm, we will host the 2017 Black Convocation gathering. This year's theme will be "Black Joy." On November 30, 2017, at 4PM, the Bunche Center will partner with the African American Studies Department and others to bring Professor Heather Ann Thompson to campus to speak about her Pulitzer-Prize winning book, [Blood in the Water: The 1971 Attica Uprising and its Legacy](#). Stay tuned for announcements about these events and more to come.

SAVE THE DATE! FALL 2017 events announced.

CHITJA TWALA TALK

DATE: Tuesday, OCT. 3
TIME: 2 PM
LOCATION: TBA

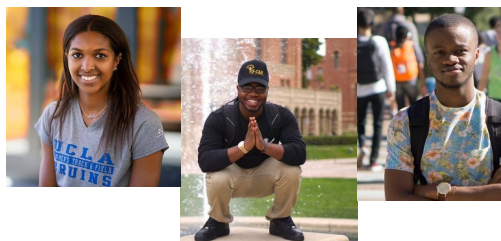
Dr. Chitja Twala, Senior Lecturer in the Department of History at the University of the Free State (UFS), has done extensive research on the early history of the African National Congress (ANC) in the Free State.

Black Convocation 2017

DATE: Tuesday, OCT. 10
TIME: 5 PM–7:30 PM

LOCATION: DE NEVE PLAZA, 351 Charles E. Young Drive West, Los Angeles, CA 90024

The Black Convocation is an annual event that welcomes new and returning students to the UCLA campus and makes them aware of the different organizations, departments, and resources available to serve them. It is an evening full of Bruin pride, providing encouragement, anecdotes about the past, and a glimpse of the future from UCLA faculty, staff, and alumni dedicated to supporting all students.



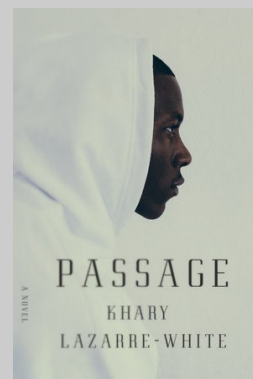
The Black Convocation is co-sponsored by the Ralph J. Bunche Center for African American Studies, UCLA Department of African American Studies, UCLA Black Alumni Association, Academic Advancement Program (AAP), UCLA Institute of American Cultures (IAC), IAC Development, UCLA Student Affairs, UCLA Office of Residential Life (ORL), UCLA Equity, Diversity and Inclusion (EDI), UCLA Black Graduate Students Association, UCLA First Year Experience, UCLA Department of Sociology, UCLA Department of Chemistry and Biochemistry, Afrikan Student Union (ASU), UCLA Anderson Black Business Student Association (BBSA), Black Bruin Transfer Success (BBS), and Dean of UCLA Social Sciences.

AUTHORS' SERIES WITH KHARY LAZARRE-WHITE

DATE: Monday, OCT. 16
TIME: 12:30PM
LOCATION: Haines Hall 153

375 Portola Plaza, Los Angeles, CA 90095

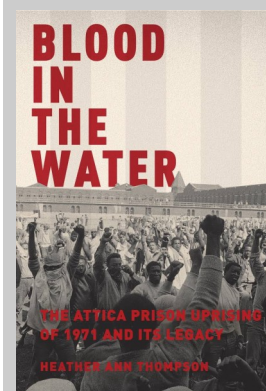
Social justice advocate, attorney and activist, Khary Lazarre-White, will discuss his novel "Passage," which tells the story of Warrior, a young black man in Harlem and Brooklyn in 1993. Striking is the parallel between Warrior's experience and the experiences of black male youth today.



AUTHORS' SERIES WITH DR. HEATHER ANN THOMPSON - "The Attica Prison Uprising of 1971 and Why it Matters"

DATE: Thursday, NOV. 30
TIME: 4PM–6PM
LOCATION: UCLA FACULTY CENTER—Main Dining Hall
RSVP REQUIRED DUE TO LIMITED SEATING. RSVP LINK TO BE AVAILABLE SOON.

Dr. Heather Ann Thompson, Professor of History and Afro-American and African Studies at University of Michigan, will discuss her 2017 Pulitzer Prize winning book, *Blood in the Water: The Attica Prison Uprising of 1971 and its Legacy*.



All events are free and open to the public.

For directions to UCLA, [click here](#).

To view the UCLA Campus map, [click here](#).

Short-term parking is available at self-service parking stations located throughout campus, and **daily parking permits** (\$12) can be purchased at Information & Parking Booths located at Westholme & Hilgard, Westwood Plaza, or Sunset and Westwood Plaza.

UCLA is a Smoke and Tobacco Free Campus.

Ana-Christina Ramón, Assistant Director of the Bunche Center, moves to UCLA Division of Social Sciences

After twelve years of dedicated service to the Bunche Center, Ana-Christina Ramón (image right) will move to the UCLA College, Social Science Division and continue her pivotal research on diversity (or the lack thereof) in Hollywood alongside Dean Darnell Hunt and other Division Initiatives. Her new title will be Director, Research and Civic Engage-

ment. She is the co-author of the *Hollywood Diversity Report*, which published its fourth annual report in February 2017 and has been cited by numerous media and news outlets. The Bunche Center would like to thank Dr. Ramón for her seminal contributions to the Bunche Center.



Diversity is not a plot point—just normal for millennial New Yorkers like Peter Parker

In a *Los Angeles Times* article, “Diversity isn’t a plot point in ‘Spider-Man: Homecoming.’ It’s just normal for millennial New Yorkers like Peter Parker,” director Jon Watts discussed his decision to cast a diverse ensemble to reflect the true diversity of New York.

“‘Homecoming’ offers the most realistically diverse world yet, in a franchise that has been slow to give minorities and women the same degree of complexity and significance to play as the white men who get to drive and dominate these stories.”

Jen Yamato of the *LA Times* writes,

To read more, [click here](#).



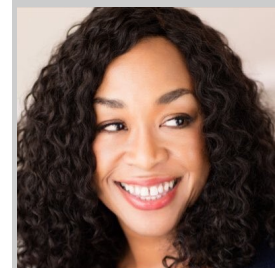
Jacob Batalon, left, and Tom Holland in Columbia Pictures' "Spider-Man: Homecoming." (Chuck Zlotnick / Columbia Pictures)

Shonda Rhimes Leaves ABC for Netflix's "limitless possibilities"

Shonda Rhimes and her production company, Shondaland, will be moving to Netflix for a multi-year deal. Rhimes' hit shows, including "Grey's Anatomy," "Scandal" and "How to Get Away with Murder," have been among ABC's top-rated series. Dean Darnell Hunt stated, "Shonda Rhimes paved the way for a lot of the transformation that we are seeing

in television today." Hunt also spoke about how television executives are beginning to understand that leads played by ethnic minorities are not only marketable but being "demanded by increasingly diverse audiences."

To read more, [click here](#).



Shonda Rhimes

New 2017-18 TV Shows are Mostly White and Male

According to an analysis by *Variety*, out of 46 lead and co-lead actor roles and 42 showrunners and co-showrunners on the 39 new series ordered by Big Five broadcasters for next season (ABC, CW, FOX, NBC and CBS), only 20% of lead actors were Hispanic or non-white and 35% were female, and of the showrunners, 10% were non-white or Hispanic and 29% were female.

Dean Darnell Hunt said, "It's not a very encouraging analysis. Given the fact that things currently have a long way to go, if what you're looking forward to for the next season in many of the categories isn't exceeding what's already there, there's little to no prospect for progress."

To read more, [click here](#).

Mammies by Betye Saar turn stereotype to power at the Craft & Folk Art Museum

The exhibition, *Betye Saar: Keepin' It Clean*, at the Craft & Folk Art Museum in Los Angeles, focuses on Saar's wash-board pieces, a central motif in exploring aspects of black female identity in U.S. history. Many assemblages feature the stereotypical figure of the mammy, most famously personified by Aunt Jemima.

Steven Nelson, UCLA Historian and a Bunche Center affiliated faculty member, said, "Historically, the mammy was the ultimate image of black female servitude in the American psyche. She was kind

and giving. She cooked and cleaned and did the laundry. She took care of the children. She was harmless."

According to *Los Angeles Times* article, "Betye Saar's gun-totin' mammies turn stereotype into power at the Craft & Folk Art Museum," "she becomes a warrior, brandishing weapons, contending with injustice, facing the darkest chapters of American history."

To read more, [click here](#).



"Supreme Quality," 1998, by Betye Saar

Scholars dig into nationwide survey of post-election data at conference

On August 3-4, 2017, researchers from different universities shared their findings based on the 2016 Collaborative Multi-Racial Post-Election Survey (CMPS) at the UCLA Luskin School of Public Affairs. Attendees included Dean Darnell Hunt and Jonathan Collins, a recent doctoral graduate in political science at UCLA and a previous speaker at the Bunche Center. The survey's creators describe the 2016 survey as "the first cooperative, 100 percent user-content-driven, multiracial, multiethnic, multilingual, post-election online survey in race, ethnicity and politics in the United States."

To read more, [click here](#).



Lorrie Frasure-Yokley, UCLA Professor of Political Science and co-principal investigator for the CMPS

U.S. Justice Department's plan to investigate and sue colleges over affirmative action policies

According to *The New York Times*, the Trump Administration is planning to use the Justice Department's civil rights division to investigate and sue universities that are deemed to discriminate against white applicants through their affirmative action policies in admissions. The news comes as a shock to supporters of affirmative action in college admissions.

Gary Orfield, UCLA Professor of Education, co-director of the Civil Rights Pro-

ject at UCLA, and a Bunche Center affiliated faculty member, said that the Supreme Court decision last year provided "a strong reaffirmative of carefully limited consideration of race as one among a number of factors in admitting students to selective colleges seeking to realize the extensively proven benefits of diversity."

To read more, [click here](#).



Doug Mills/The New York Times

**RALPH J. BUNCHE
CENTER FOR
AFRICAN AMERICAN
STUDIES AT UCLA**

Mailing Address:
160 Haines Hall, Box
951545
Los Angeles, CA 90095-
1545

Phone: 310-825-7403



Newsletter Editors:
Jeannette Chi, Jan Freeman
and Ana-Christina Ramón

Library & Media Center News

The Bunche Center's Library and Media Center (LMC) has over 8,000 monograph, serial, archival and audio visual materials focusing on African, African American, and Caribbean history and culture.

The Librarian, Dalena Hunter dhunter@bunche.ucla.edu, coordinates the Images in Blackness Film Series, which features screenings and discussions by filmmakers and scholars whose work

explores how diversity affects the entertainment industry.

The library is currently seeking donations for its special collections. Materials relevant to Black Los Angeles history are especially welcome.

The Library and Media Center is located at 135 Haines Hall. For more information including library hours, [click here](#).



Support The Bunche Center

We invite you to include the Bunche Center in your charitable giving plans. Contributions in any amount are welcome and all donations are 100%-tax deductible.

Give Online -

To make your donation to the Bunche Center, [Click Here](#).

Matching Gifts -

To see if your company will match a donation, [Click Here](#).

For additional information on how to make a contribution to the Bunche Center, please [Click Here](#). You may also contact the Center directly at 310-825-7403.

Subscribe Today!

***Make sure to stay up-to-date with
Bunche Center news in 2017!***

Subscribe to our Website: www.bunchecenter.ucla.edu

Follow us on Twitter: [@BuncheUCLA](https://twitter.com/BuncheUCLA)

Like us on Facebook: www.facebook.com/BuncheCenter.UCLA

Subscribe to our YouTube: www.youtube.com/user/uclabunchecenter

SUBSCRIBE TO OUR WEBSITE TODAY to receive the Bunche Center Newsletter and other Center info. Got questions? Call 310-825-7403.

Your privacy is important to us.
We do not divulge email addresses on our mailing list to third party groups or vendors.