

**RALPH J. BUNCHE
CENTER FOR
AFRICAN AMERICAN
STUDIES AT UCLA**

160 HAINES HALL,
BOX 951545
LOS ANGELES, CA
90095-1545
PH (310) 825-7403

Special points
of interest:

- Bunche Center
Interim Director
Announced
- Darnell Hunt
Appointed Dean of
Social Sciences in the
UCLA College
- Faculty and Staff
News

Inside this issue:

Pg.

Darnell Hunt Appointed Dean of Social Sciences in the UCLA College	2
UCLA Academic Senate announces election results	2
Journal criticized for not consulting black scholars on race	2
New research: student well-being higher in diverse schools	3
How much more evidence does Hollywood need before it trusts its biggest projects to talented women?	3
Bunche Center in the News	3
Library & Media Center News	4



Bunche Center News—July-August 2017

Dr. Kelly Lytle Hernandez To Serve as Interim Director, UCLA Ralph J. Bunche Center for African American Studies



Dear Colleagues,

I am pleased to announce that Dr. Kelly Lytle Hernandez, Professor of History and African American Studies, will be the Interim Director for the Ralph J. Bunche Center for African American Studies, effective July 1, 2017.

Professor Lytle Hernandez is one of the nation's leading historians of race, policing, and incarceration in the United States. Her award-winning book, *MIGRA! A History of the U.S. Border Patrol* (University of California Press, 2010), explored the making and meaning of the U.S. Border Patrol, arguing that the century-long surge of U.S. immigration law enforcement in the U.S.-Mexico borderlands is a story of race in America. Her latest publication, *City of Inmates: Conquest, Rebellion, and the Rise of Human Caging in Los Angeles, 1771-1965* (University of North Carolina Press, 2017), is an unsettling tale that spans two centuries to unearth the long rise of incarceration as a social institution bent toward disappearing Black, Brown, and Indigenous peoples from land, life, and society in the United States. She is also the Principal Investigator for the project, Million Dollar Hoods, a mapping of how much Los Angeles area police departments have spent on incarceration since 2010 (milliondollarhoods.org).

Professor Lytle Hernandez received her B.A. in Ethnic Studies from UC San Diego, and Ph.D. in History from UCLA.

I would like to recognize and thank Professor Darnell Hunt for his many years of distinguished service as director.

Please join me in welcoming Professor Lytle Hernandez to the Bunche Center in this leadership role.

Sincerely,
David K. Yoo
Vice Provost
Institute of American Cultures

Darnell Hunt Appointed Dean of Social Sciences in the UCLA College



Dr. Darnell Hunt (image left), Director of the Ralph J. Bunche Center for African American Studies since 2001 and Chair of Sociology at UCLA, has been selected as the new

dean of social sciences in the UCLA College, effective July 1, 2017. A renowned scholar of race, media and culture, Hunt has written publications such as *Screening the Los Angeles 'Riots': Race, Seeing, and Resistance* and *Black Los Angeles: American Dreams and Racial Realities*. He is also the lead author of the Hollywood Diversity Report, which examines the relationships between diversity and the bottom line in the Hollywood entertainment industry; the report has been cited by numerous media outlets.

The Bunche Center would like to congratulate Dr. Darnell Hunt and thank him for his outstanding leadership and contributions to the Bunche Center.

To read more, [click here](#).

**Bunche
Library &
Media Center
Summer
Hours:**

**Tuesday-
Thursday
11am–3pm**

UCLA Academic Senate announces election results



Sandra Graham (image left), Professor of Education and Presidential Chair in Education and Diversity, was appointed chair of the Academic Senate for 2017-18. Graham is known for her research on academic

motivation and social development in children of color, particularly in school contexts that vary in racial and or ethnic diversity.

Members of the Academic Senate, the “vehicle through which University of California faculty share in the operation and management of the University,” are responsible for setting admissions criteria, approving and supervising all courses and curricula, and advising the administration on faculty appointments and promotions and financial planning.

To read more, [click here](#).

Journal criticized for not consulting black scholars on race

A leading political philosophy journal's feature about Black Lives Matter received criticism for not including contributions from a black academic in its June issue. Melvin Rogers, UCLA professor of Political Science and African American Studies, called the lack of black voices “especially egregious.” “You have a major social movement that comes about because of police violence and a failure of the state to respond effectively. You put together a symposium ... and construct it in such a way that replicates the very problem the movement is trying to

respond to. The signal this sends to scholars of color that care about this is that they, too, are invisible.”

To read more, [click here](#).

**‘The omission
left many
wondering: Do
black minds
matter?’**

New research: student well-being higher in diverse schools

Sandra Graham, UCLA Professor of Education, co-authored a report in the journal, *Child Development*, and found that students who attend more racially—and ethnically-diverse schools report less vulnerability, loneliness, insecurity and bullying. The study polled nearly 6,000 sixth graders in 26 middle schools mostly in Los Angeles County. According to Graham, “kids [in more diverse schools] have more opportunity to have cross-race friendships and then they become protective. So if you’re in a diverse school and you’ve made friends with people from different racial and ethnic groups then they help protect you, they help introduce

you to kids in their ethnic, racial group, there’s more opportunities to find your niche and fit in.”

To read the full 89.3 *KPCC* article, [click here](#).



Maya Sugarman/KPCC

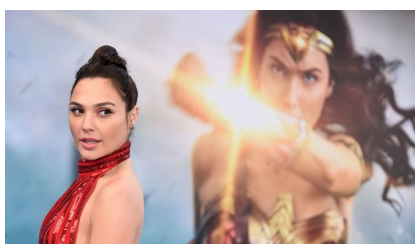
How much more evidence does Hollywood need before it trusts its biggest projects to talented women?

‘Wonder Woman’ had the best domestic opening (\$103 million its debut weekend in the US) by a female director, Patty Jenkins, and featured a female lead character played by Israeli actress, Gal Gadot. The film drew almost as many men as women into the movie theaters.

According to the 2017 Hollywood Diversity Report, authored by Dr. Darnell Hunt, Dean of Social Sciences, Ana Christina-Ramón, Bunche Assistant Director, Dr. Vanessa Diaz, Postdoctoral Fellow, and Michael Tran & Amberia Sargent, Graduate Student Researchers, women directed only 7.7% of the top films in 2015.

Considering that ‘Wonder Woman’ has achieved worldwide commercial and critical success, “How much more evidence does Hollywood need before it will trust its biggest projects to talented women?”

To read the *Los Angeles Times* article, [click here](#).



Jordan Strauss /Invision/Associated Press

Bunche Center in the News:

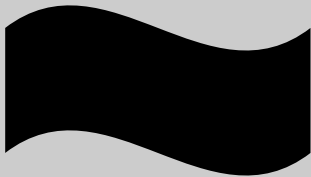
Vox: [Milwaukee police shooting of Sylville Smith: officer cleared of killing of black man](#)

Los Angeles Times: [Bill Cosby's relationship with African Americans is anything but black and white](#)

**RALPH J. BUNCHE
CENTER FOR
AFRICAN AMERICAN
STUDIES AT UCLA**

Mailing Address:
160 Haines Hall, Box
951545
Los Angeles, CA 90095-
1545

Phone: 310-825-7403



Newsletter Editors:
Jeannette Chi, Jan Freeman
and Ana-Christina Ramón

Library & Media Center News

The Bunche Center's Library and Media Center (LMC) has over 8,000 monograph, serial, archival and audio visual materials focusing on African, African American, and Caribbean history and culture.

The Librarian, Dalena Hunter dhunter@bunche.ucla.edu, coordinates the Images in Blackness Film Series, which features screenings and discussions by filmmakers and scholars whose work

explores how diversity affects the entertainment industry.

The library is currently seeking donations for its special collections. Materials relevant to Black Los Angeles history are especially welcome.

The Library and Media Center is located at 135 Haines Hall. For more information, [click here](#).



Support The Bunche Center

We invite you to include the Bunche Center in your charitable giving plans. Contributions in any amount are welcome and all donations are 100%-tax deductible.

Give Online -

To make your donation to the Bunche Center, [Click Here](#).

Matching Gifts -

To see if your company will match a donation, [Click Here](#).

For additional information on **how to make a contribution to the Bunche Center**, please [Click Here](#). You may also contact the Center directly at 310-825-7403.

Subscribe Today!

***Make sure to stay up-to-date with
Bunche Center news in 2017!***

Subscribe to our Website: www.bunchecenter.ucla.edu

Follow us on Twitter: [@BuncheUCLA](https://twitter.com/BuncheUCLA)

Like us on Facebook: www.facebook.com/BuncheCenter.UCLA

Subscribe to our YouTube: www.youtube.com/user/uclabunchecenter

SUBSCRIBE TO OUR WEBSITE TODAY to receive the Bunche Center Newsletter and other Center info. Got questions? Call 310-825-7403.

Your privacy is important to us.
We do not divulge email addresses on our mailing list to third party groups or vendors.