



# NEWS April 2016

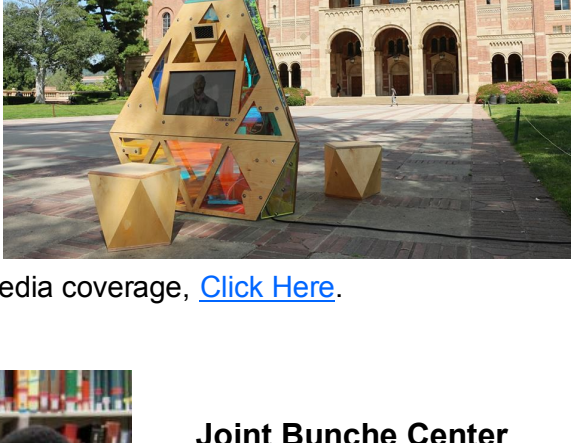
[www.bunchecenter.ucla.edu](http://www.bunchecenter.ucla.edu)  
[Support the Center](#)

## Featured Stories:

### Hollywood Diversity Report Featured in Interactive Display

Ever wanted to "Ask the Professor" a question about their research? Well at the "Ask the Professor" interactive kiosk, visitors can do just that.

The display features touch screens with information representing the Bunche Center's [Hollywood Diversity Report](#), and was made available in Dickson Court starting March 28th.



The display encouraged participants to interact with the kiosk, which featured the report's authors, Dr. Darnell Hunt, Dr. Ana-Christina Ramon, and graduate student research, Michael Tran.

To learn more about the HDR and its media coverage, [Click Here](#).



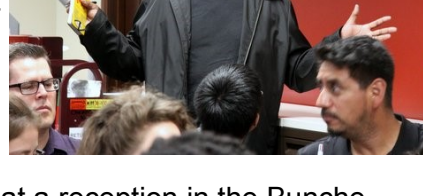
### Joint Bunche Center & Chicano Studies Research Center Event Talks Issues of Black Radicalism

Last month's joint event welcomed Gaye Theresa Johnson, a new associate professor at UCLA. Johnson, who has two new books coming out in 2017: *The Futures of Black Radicalism* and *Let's Get Free: Musicians on Activism in the 21st Century*, has a joint appointment in African American and Chicano studies.



Photo Credit: Michael Stone

Johnson discussed *The Futures of Black Radicalism* to a full house of students, faculty and the general public in the CSRC Library. The talk was introduced by Belinda Tucker, Vice Provost of the Institute of American Cultures. Jonathan Collins, a Doctoral Candidate in Political Science at UCLA, moderated the talk.



Immediately following, the conversation continued at a reception in the Bunche Center Library and Media Center. Attendees enjoyed lunch and continued talking with Professor Johnson, who was accompanied by her husband, rapper/author/producer, Chuck D., leader of the group Public Enemy.

## News and Announcements:

The Bunche Center is a hub for lectures, readings, screenings and other informative and entertaining events. To learn more, [Click Here](#).

### Elevate Hosts Performance & Discussion "The Mountaintop" The Matrix Theatre Sunday, April 3, 2016

The UCLA Department of Theater, Film & Television ELEVATE Diversity Initiative will host a post-performance discussion of the play, *The Mountaintop*, at the Matrix Theatre.

The play focuses on the last speech given by MLK before his assassination. The discussion will be moderated by UCLA PhD Candidate, Anndretta Lyle.

For more information, [Click Here](#).



### The Bunche Center Circle of Thought, Robin D.G. Kelley & the UCLA Asian American Studies Center present

#### Eric Tang *Unsettled: Fugitive Life in the Hyperghetto* Wednesday, April 6, 2016

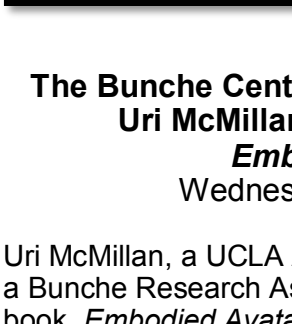
In this lecture, Eric Tang revisits the summer of 1967 to uncover the origins of the hyperghetto and the low-intensity warfare that has since been waged against its mostly African-American residents.

Tang is an Assistant Professor in the African and African Diaspora Studies Department and faculty member in the Center for Asian American Studies at the University of Texas at Austin. For more information, [Click Here](#).



### The Bunche Center Authors' Series presents

#### Michael Ralph *Forensics of Capital* Wednesday, April 13, 2016



New York University Professor Michael Ralph will discuss his new book, *Forensics of Capital*. The book explores Senegal and US imperialism. This event is co-sponsored by the UCLA departments of Anthropology and African Studies. For more information, [Click Here](#).

### The Bunche Center Authors' Series presents

#### Uri McMillan discussing his book *Embodied Avatars* Wednesday, April 20, 2016

Uri McMillan, a UCLA Assistant Professor of English and a Bunche Research Associate, will discuss his book, *Embodied Avatars: Genealogies of Black Feminist Art and Performance*. The book explores how black women artists have purposefully engaged in self-objectification, thus, transforming them into art objects.

For more information, [Click Here](#).



## Faculty & Staff News:

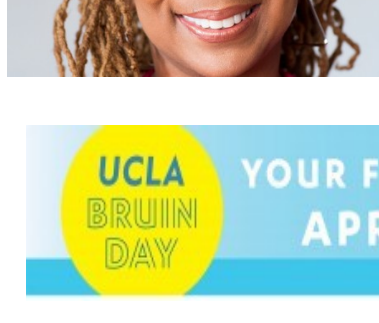
### Keyes Appointed Associate Dean

## THE UCLA HERB ALPERT SCHOOL OF MUSIC

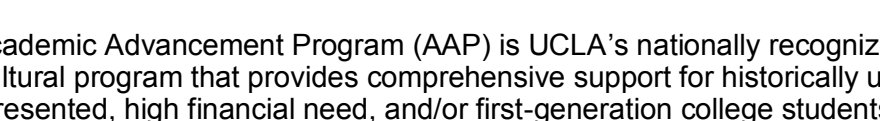
Ethnomusicology Professor Cheryl L. Keyes has been appointed as an Associate Dean of Equity, Diversity and Inclusion for the newly approved Herb Alpert School of Music. HASoM will be the first School of Music in the University of California system.



### Crenshaw Honored by ABF



Kimberlé Crenshaw, Professor of Law at UCLA and Columbia Law School, has been named the 2016 Fellows Outstanding Scholar by the American Bar Foundation.



### UCLA's AAP Hosts Bruin Day Events for Students and Families

The Academic Advancement Program (AAP) is UCLA's nationally recognized multicultural program that provides comprehensive support for historically underrepresented, high financial need, and/or first-generation college students.

On April 16, as part of the Bruin Day celebrations, AAP will host a series of events for students and their families. For more information [Click Here](#).

## Library & Media Center News:

"Let the rain kiss you  
Let the rain beat upon your head with silver liquid drops  
Let the rain sing you a lullaby..."  
--Langston Hughes "April Rain Song"

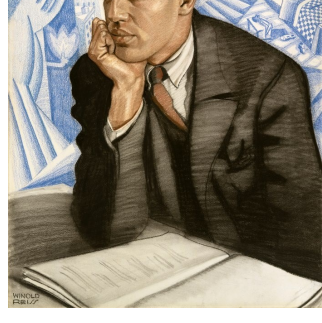


Photo Credit: pinterest.com

April is the month of rain. And you know what else? It's National Poetry Month (NPM)! To learn more about African American poets, [Click Here](#). And be sure to visit the Bunche Center Library and Media Center to explore these works further.

The Bunche Center's Library and Media Centers (LMC) has print, multimedia, and archival materials relevant to African Americans and the diaspora, their institutions and achievements worldwide, with a particular emphasis on UCLA, Los Angeles, and the Southwestern United States.

Check the Center's website for Winter quarter library hours. Research and reference questions by phone and email are always welcome. The Librarian can be reached at 310-825-6060 or by email at [dhunter@bunche.ucla.edu](mailto:dhunter@bunche.ucla.edu). The LMC is located in 135 Haines Hall. For more about the library, [Click Here](#).

## Support The Bunche Center:

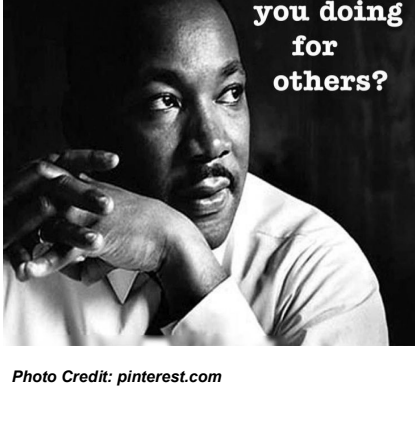


Photo Credit: pinterest.com

We invite you to include the Bunche Center in your charitable giving plans. Contributions in any amount are welcome and all donations are 100%-tax deductible.

Give Online -  
To make your donation to the Bunche Center, [Click Here](#).

Matching Gifts -  
To see if your company will match a donation, [Click Here](#).

For additional information on **how to make a contribution to the Bunche Center**, please [Click Here](#). You may also contact the Center directly at (310) 825-7403.

### Subscribe Today!

**Make sure you stay up-to-date with Bunche Center news in 2016!**

**Subscribe to our Website:** [www.bunchecenter.ucla.edu](http://www.bunchecenter.ucla.edu)

**Follow us on Twitter:** [@BuncheUCLA](https://twitter.com/BuncheUCLA)

**Like us on Facebook:** [www.facebook.com/BuncheCenter.UCLA](https://www.facebook.com/BuncheCenter.UCLA)

**SUBSCRIBE TO OUR WEBSITE TODAY** to receive the Bunche Center Newsletter and other Center info. Question? Call 310-206-5500.

**Ralph J. Bunche Center for African American Studies at UCLA**

• 160 Haines Hall, Box 951545 • Los Angeles, CA 90095-1545 •  
(310) 825-7403

[www.bunchecenter.ucla.edu](http://www.bunchecenter.ucla.edu)  
[www.facebook.com/BuncheCenter.UCLA](https://www.facebook.com/BuncheCenter.UCLA)  
[www.youtube.com/user/uclabunchecenter](https://www.youtube.com/user/uclabunchecenter)

**Newsletter Editor:**  
Dawn Jefferson

**Layout & Design:**  
Ana-Christina Ramon