



## News: May 2013

### Featured Stories:

#### The Bunche Center Celebrates the Life of our Colleague and Friend

Antronette "Toni" Yancey  
November 1, 1957 - April 23, 2013

"Doctor – Educator – Author – Poet"

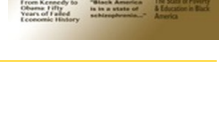


It is with deep sadness that we inform you of the passing of Dr. Toni Yancey, who died April 23, 2013. Dr. Yancey was a professor in the Department of Health Services, UCLA School of Public Health, was Co-Director of the UCLA Kaiser Permanente Center for Health Equity, and was a Bunche Center affiliated faculty member. For more information [Click Here](#).



In June, the Bunche Center hosts the Summer Humanities Institute (SHI). SHI caters to high-achieving students from historically under-represented groups who are planning to pursue a doctoral degree in the humanities and social sciences. As SHI enters its 13<sup>th</sup> year, we wanted to feature the accomplishments of some past participants. Thabiti Asukile, who was in the first cohort of the Bunche Summer Humanities Institute in 2001, recently provided us with a glimpse of his academic activities since participating in the program. To read more, [Click Here](#).

The National Urban League (NUL) recently released its 2013 "State of Black America Report." While the data showed some progress made in education overall, the NUL insists that these relative improvements should not overshadow the continued and growing unemployment and salary gaps between blacks and whites. To read more about the report, [Click Here](#).



### News and Announcements:

The Bunche Center is a hub for lectures, readings, screenings and other informative and entertaining events. To learn more, [Click Here](#).

#### UCLA's New Smoking Policy

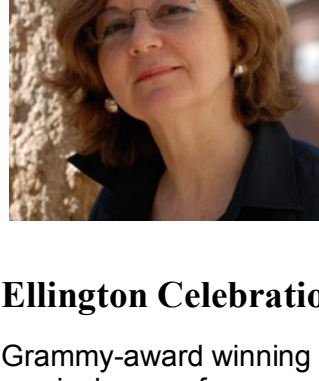
Starting April 22, 2013, UCLA will be a tobacco-free campus. The UCLA's new tobacco-free policy will prohibit cigarettes, pipes, cigars, chewing tobacco and all other forms of tobacco, as well as e-cigarettes. Please keep in mind that attendees at all UCLA campus events must also adhere to the new UCLA tobacco-free policy. For additional information about the policy, [Click Here](#). To learn more about the [toll that smoking and lung cancer has on African Americans](#), [Click Here](#).

#### Bunche Center Scholarships

The Julian "Cannonball" Adderley Memorial Scholarship fund was established in 1976 to honor the memory of the late internationally renowned jazz musician, Julian "Cannonball" Adderley. It represents an effort on the part of the Bunche Center to foster greater appreciation for the African American musical heritage. Awards (\$500) are made on a competitive basis to UCLA undergraduates with financial need majoring in Afro-American Studies, the arts, music, and other related fields and are for UCLA educational expenses for the 2013-14 academic year.

In academic year 1991-92, John Densmore (former drummer for the musical group The Doors) established an endowment fund to support UCLA undergraduate majors or minors in Afro-American Studies. Funds (\$5,000) are awarded to students who have demonstrated outstanding academic success and other achievements and are for UCLA educational expenses for the 2013-14 academic year. For further information, please call 310-206-8267. **Applications for both scholarships are due at noon (PST) on 5/31/13.**

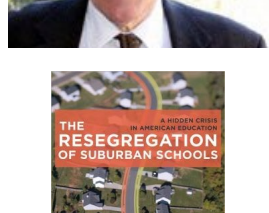
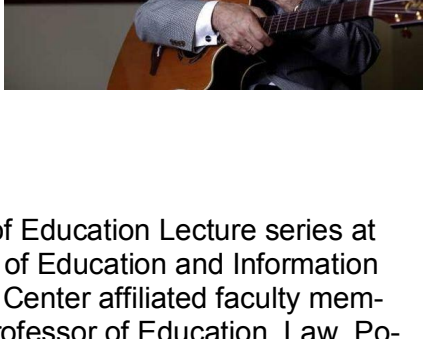
### Faculty News:



Françoise Lionnet, Director, African Studies Center, Professor, French & Francophone Studies, Comparative Literature, and Gender Studies, and Bunche Center affiliated faculty, gave the 114<sup>th</sup> UCLA Faculty Research Lecture, "Perilous Crossings: Shipwrecks, Migrations, and the Global Pursuit of Hope," on April 15th, 2013. For more information, [Click Here](#).

#### Ellington Celebration

Grammy-award winning musician, UCLA Ethnomusicology professor, and Bunche Center affiliated faculty Kenny Burrell delivered a lecture, "The Magic and Mystery of Ellingtonia," at a celebration honoring the music of Duke Ellington on Monday, April 29, 2013 in UCLA's Schoenberg Hall. The event focused on the many contributions of Duke Ellington. To read more, [Click Here](#).



On May 9th, the Speaking of Education Lecture series at the UCLA Graduate School of Education and Information Studies will feature Bunche Center affiliated faculty members, Gary Orfield, UCLA professor of Education, Law, Political Science and Urban Planning, and Lorrie Frasurre-Yokley, Assistant Professor of Political Science at UCLA, discussing their book, "Resegregation of Suburban Schools: A Hidden Crisis in American Education," (Harvard Education Press, 2012).



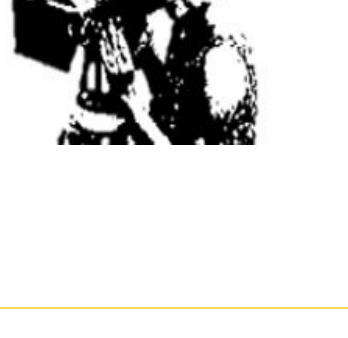
The book, edited by Orfield and Penn State professor Erica Frankenberg, examines racial integration in schools, an issue thought to have been solved during the Civil Rights Movement. The book focuses on how suburban areas are handling an influx of poor and minority students, profiling six suburbs (outside of Atlanta, Boston, Chicago, Los Angeles, Minneapolis, San Antonio) as well as Beach County, Florida (which encompasses West Palm Beach and Boca Raton). Lorrie Frasurre-Yokley contributed a chapter to the volume, entitled, "Holding the Borderline: School District Responsiveness to Demographic Change in Orange County, California." For more information, [Click Here](#).



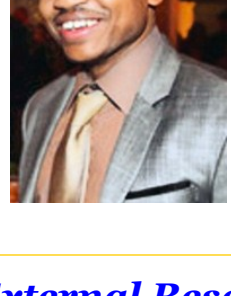
### Library & Media Center News:

On May 2<sup>nd</sup>, May 15<sup>th</sup>, the Bunche Center will continue its film and discussion series, **Images of Blackness: Black Women Filmmakers and the Normalization of Inequality**.

The series features filmmakers and scholars whose work explores the impact the absence of black women visual artists has on creative and social representation. It will also examine how continued marginalization of this group influences their stories in popular culture. Throughout this series, the Bunche Center will examine the intersection between race, gender, and sexuality and focus on its role in determining acceptance, critical consideration, and commercial success in the entertainment industry. For more information about the film series, [Click Here](#).



### Interdepartmental Program in Afro-American Studies News:



Benjamin "BJ" McBride, a 2011 graduate of UCLA's Interdepartmental Program in Afro-American Studies was recently appointed Special Assistant to Mayor Kevin Johnson in Sacramento, California. To read the rest of the article, [Click Here](#).

### External Research Opportunities:

#### UCLA/Hong Kong University of Science and Technology Faculty Collaborative Grants

##### Proposals now being accepted for 2013-2014

The UCLA-HKUST collaborative faculty grants are intended to build ties between the two institutions and promote collaboration in research and graduate training in the humanities or in the social and behavioral sciences. The deadline for proposals for projects beginning in 2013 has been extended. Proposals should be submitted via the UCLA Asia Institute online application by 11:59 PM Pacific Daylight Time, May 10, 2013. For additional information [Click Here](#).

#### Doris Duke Building Demand for the Arts Grants May 31<sup>st</sup> Deadline

These grants support organizations and artists in joint efforts to develop audience demand for jazz, theatre and/or contemporary dance. This program encourages creative thinking about how to increase this demand and to engage communities in new ways. Grants will support attempts by exemplary artists and organizations who must have a prior history of working together and will mutually conceive the proposals. For more information, [Click Here](#).



### Support The Bunche Center:

Gifts to the Bunche Center support our commitment to teaching, research, and service, ensuring that a UCLA education remains accessible and that the caliber of your scholarship and research is peer to none. Your individual gift helps support vital research, programs and services. To make a contribution, [Click Here](#). You may also contact the Center's development director, Bea Richman, at 310-825-8654 or [brichman@support.ucla.edu](mailto:brichman@support.ucla.edu). Or, you may contact the Center directly at (310) 825-7403.

#### Subscribe Today!

Make sure you stay up-to-date with

Bunche Center news in 2013!

Subscribe to our Website: [www.bunchecenter.ucla.edu](http://www.bunchecenter.ucla.edu)

Follow us on Twitter: [www.twitter.com/BuncheUCLA](http://www.twitter.com/BuncheUCLA)

Like us on Facebook: [www.facebook.com/BuncheCenter.UCLA](http://www.facebook.com/BuncheCenter.UCLA)

To **subscribe** to our mailing list so you can receive the Bunche Center Newsletter and other Center info, e-mail [bunche\\_info@lists.ucla.edu](mailto:bunche_info@lists.ucla.edu) or call 310-825-7403. Your privacy is important to us. We do not divulge email addresses on our mailing list to third party groups or vendors. If you wish to **unsubscribe** from our mailing list, please respond to this email and type "unsubscribe" in the subject field.