



BUNCHE CENTER NEWS

OCTOBER 2011

In this issue...

- [Director's Commentary](#)
- [Announcements](#)
- [Programs & Events](#)
- [Call for Papers/
Opportunities](#)
- [Awards & Accolades](#)
- [Alumni News](#)
- [Support](#)
- [Library & Media Center](#)
- [IDP Afro-Am Studies](#)
- [Research](#)
- [In the Community](#)

Website Links

- [Home](#)
- [Research](#)
- [Faculty](#)

Newsletter Editor:
Dawn Jefferson

Layout & Design:
Ana-Christina Ramon

The faculty and staff of the Bunche Center would like to welcome new and returning students back to the UCLA campus for the 2011-2012 academic year.

For updated and detailed information on Bunche Center research, programs and activities, please visit our website regularly at www.bunchecenter.ucla.edu or follow us on Facebook at www.facebook.com/BuncheCenter.UCLA.

Director's Commentary

It's no secret that our nation is mired in the deepest economic slump since the Great Depression. What is less often addressed are the racial implications of this crisis.

Like the proverbial miner's canary, invoked so insightfully by Lani Guinier and Gerald Torres in their work, people of color have been the most susceptible to the toxic atmosphere of our present economy, particularly African Americans. In the best of times, blacks face unemployment rates of about twice the national average. The present crisis has done little to disrupt this historical pattern, as the black unemployment rate in July 2011, 15.9 percent, was about twice the 8.1 percent figure posted by whites. Things are even worse for black youth, for whom the unemployment rate ballooned to more than 39 percent.

Meanwhile, a national obsession with debt reduction and neo-liberal fantasies about market solutions have resulted in mandates to take more federal money out of the economy, which will likely increase downward pressure on new job creation, consumer spending, and tax revenues. Declining tax revenues -- exacerbated by conservative demands for taxing the wealthy at shamefully low levels -- will necessarily shrink the public sector further, thus threatening many of the solid government jobs black workers have counted on over the years. The story is still being written about how all of this will affect black homeownership and racial disparities in wealth or educational attainment. One thing is for sure, it won't be pretty.

Ralph J. Bunche Center for African American Studies at UCLA
160 Haines Hall, Box 951545 • Los Angeles, CA 90095-1545 • (310) 825-7403

www.bunche.ucla.edu
www.facebook.com/BuncheCenter.UCLA
www.youtube.com/user/uclabunchecenter

Director's Commentary (Continued)

It's ironic, but no accident, that all of this is occurring on the watch of our nation's first black president. Politics in America, being what they are, teach us that the current, so-called "post-racial" times are *anything but* beyond race. The president's blackness, it is now clear, has contributed directly to the fiscal doublebind we face. It has effectively worked to muzzle those traditionally most outspoken about our nation's inequities -- African Americans -- and it has emboldened those most committed to regressive social policy -- Tea Partiers and other pawns of the elite -- to mock the president's very credibility, particularly when it comes to his fitness for leading the nation on matters of economic justice.

It goes without saying that the 2012 elections will constitute a pivotal moment in American politics. The next dozen months or so will undoubtedly reveal much about the evolving but enduring relationship between race, power, and privilege. Please join us at the Bunche Center as we explore these issues in more detail over the year through an array of talks, colloquia, and related research projects.

Darnell M. Hunt
Director
Professor of Sociology

Faculty Spotlight



Joining the faculty in the fall of 2011, the Bunche Center is pleased to welcome to UCLA, **Dr. Sarah Haley**, an assistant professor of African American Studies and Women's Studies. She will also serve as the new Bunche Center faculty associate. Dr. Haley received her B.A. in Political Science from Vassar College and her PhD in African American Studies and American Studies from Yale University. Her research interests focus on prison studies, nineteenth- and twentieth-century African American history, women's and gender history, labor studies, black feminism, and feminist theories of violence.

Ralph J. Bunche Center for African American Studies at UCLA
160 Haines Hall, Box 951545 • Los Angeles, CA 90095-1545 • (310) 825-7403

www.bunche.ucla.edu
www.facebook.com/BuncheCenter.UCLA
www.youtube.com/user/uclabunchecenter

Faculty Spotlight (Continued)

Dr. Haley recently spoke with us about her work and her experience since coming to UCLA.

Ed.: What are some of the things you look forward to being involved in at UCLA?

SH: In addition to working with my home department, Women's Studies, I am looking forward to being involved with the Bunche Center. The Center has a rich speaker's series and fascinating research projects and thinkers dealing with critical race theories. And I think that UCLA has an incredible law school-I want to know that community as well. With Afro-American Studies going through departmentalization, I think that will also bring many opportunities to be involved. And of course, I'm looking forward to teaching; I've heard great things about the students!

Ed.: What courses are you teaching this year?

SH: This winter I'll be teaching a course on African American women's history, as well as one on race, gender, and punishment. I will also be teaching an introduction to women's studies on power.

Ed.: What are you working on next?

SH: My research is mostly centered on African American women and punishment/prison studies. Right now, I am working on a book based on my dissertation. It examined the history of black women in Georgia who were imprisoned after the Civil War through the New Deal, investigating the question of how the prison regime is a lens through which to analyze the racialized construction of gender. My dissertation received two awards: Yale University's Sylvia Ardyn Boone Prize for African American Studies and, more recently in May, the 2011 Lerner-Scott Dissertation Prize for the best doctoral dissertation in U.S. women's history from the Organization of American Historians.

My book based on the dissertation is tentatively titled, *Engendering Captivity: Black Women and Convict Labor After the Civil War*.

Ralph J. Bunche Center for African American Studies at UCLA

160 Haines Hall, Box 951545 • Los Angeles, CA 90095-1545 • (310) 825-7403

www.bunche.ucla.edu
www.facebook.com/BuncheCenter.UCLA
www.youtube.com/user/uclabunchecenter

Announcements

The Bunche Center cordially invites you to the **2011 BLACK CONVOCATION**. The event will be held on Thursday, October 6, 2011.

5:30 PM - Reception, Covell Commons Terrace

7:00 PM - Program, Grand Horizon Room

The event is co-sponsored by the Afrikan Student Union, the UCLA Office of Student Affairs, the UCLA Office of Residential Life, the Academic Advancement Program, the Interdepartmental Program in Afro-American Studies, the UCLA Community Programs Office, the UCLA Black Staff and Faculty Association, the Black Graduate Student Association, and the UCLA Black Alumni Association.

Parking is available on the UCLA campus in the Sunset Village Parking Structure for \$11. For more information, please call 310-206-8267 or visit the Bunche Center website: www.bunchecenter.ucla.edu.



October 28 - 30 2011

UCLA Parents' Weekend 2011

Dickson Plaza - Royce Quad

Parents' Weekend is an annual fall event to welcome parents of UCLA students to the Bruin family. During a **three-day celebration of all things UCLA**, parents and family members have the opportunity to experience life on campus as a Bruin.

The weekend is filled with events and activities that showcase UCLA's academic, cultural and athletic excellence including a welcome event, presentations with Chancellor Block and faculty, cultural activities, sporting events and much, much more!

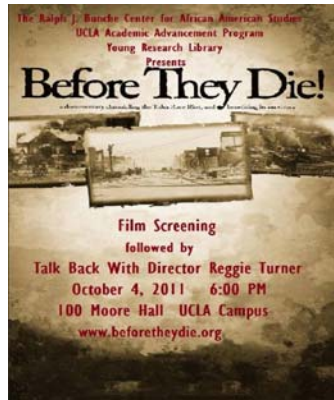
For additional information contact: (310) 794-2378 or Parents-Weekend@support.ucla.edu or www.parentsweekend.ucla.edu.

Ralph J. Bunche Center for African American Studies at UCLA

160 Haines Hall, Box 951545 • Los Angeles, CA 90095-1545 • (310) 825-7403

www.bunche.ucla.edu
www.facebook.com/BuncheCenter.UCLA
www.youtube.com/user/uclabunchecenter

Programs & Events



October 4, 2011, 6:00pm
Before They Die!
Images of Blackness Film Series
1201 Rolfe Hall, UCLA

It was the worst race riot in the history of the United States. However, most people have never heard of it. During 1921 in Tulsa, Oklahoma it took a white mob that had been deputized by the sheriff less than 24 hours to burn the prosperous African-American section of Greenwood, also known as “Black Wall Street,” to the ground. An estimated 300 were killed and over 10,000 people displaced as a 42 square block area was completely destroyed. This **documentary is the story of the survivors of the 1921 Tulsa Race Riot and their quest for justice.** There are only 45 survivors still alive today. Meet one of the survivors at this screening, along with director **Reggie Turner**. The event is co-sponsored by the Ralph J. Bunche Center, the UCLA Academic Advancement Program, and the Young Research Library. For more information click www.beforetheydiemovie.com.



October 5, 2011, 12:00 pm to 2:00 pm
Melissa Harris-Perry
Sister Citizen
Faculty Center Downstairs Lounge

The Center for the Study of Race, Ethnicity and Politics and The Center for the Study of Urban Poverty, and the Ralph J. Bunche Center present the author of *Barbershops, Bibles, and BET* and Professor of Political Science at the Tulane University, **Melissa Harris-Perry**, discussing her new book ***Sister Citizen: Shame, Stereotypes, and Black Women in America***. For more information contact Cory Gooding at cgooding@ucla.edu or visit www.csrep.ucla.edu.

Ralph J. Bunche Center for African American Studies at UCLA
160 Haines Hall, Box 951545 • Los Angeles, CA 90095-1545 • (310) 825-7403

www.bunche.ucla.edu
www.facebook.com/BuncheCenter.UCLA
www.youtube.com/user/uclabunchecenter

Programs & Events (Continued)

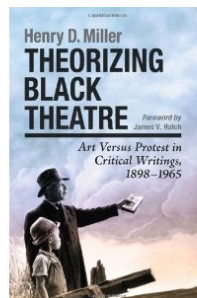


October 2, 2011 – January 8, 2012

Now Dig This! Art and Black Los Angeles 1960–1980
Hammer Museum, UCLA

This October the Hammer Museum will present ***Now Dig This! Art and Black Los Angeles 1960–1980***, a comprehensive exhibition that examines the vital legacy of the city's African American visual artists. *Now Dig This!* comprises 140 works from 35 artists that have rarely been shown in a museum setting and includes early pieces by now well-established artists as well as works once considered “lost.” The exhibition expands the art historical record by presenting an array of artists, some not widely recognized by a broad public, and connecting their work to the movements, trends, and ideas that fueled the arts in Los Angeles during this period. The work of these African American practitioners was animated to an extent by the civil rights and Black Power movements reflecting the changing sense of what constituted African American identity and American culture. Artists featured in the exhibition include **Melvin Edwards, Fred Eversley, David Hammons, Maren Hassinger, Senga Nengudi, John Outterbridge, Alonzo Davis, Dale Brockman Davis, Noah Purifoy, Betye Saar, and Charles White.** Organized by the Hammer and curated by Columbia University professor **Kellie Jones**, *Now Dig This!* will chronicle and celebrate this nuanced and multicultural history of Los Angeles.

For more information visit: www.hammer.ucla.edu/exhibitions/detail/exhibition_id/196



Friday, October 14, 2011, 12:00pm
Bunche Center Authors' Series
Haines Hall 135, UCLA

The Bunche Center Authors' Series features **Dr. Henry D. Miller** discussing his new book, ***Theorizing Black Theatre: Art vs. Protest in Critical Writings, 1898-1965.*** The book addresses the past, the present, and the future possibilities of Black theatre in this country.

Ralph J. Bunche Center for African American Studies at UCLA
160 Haines Hall, Box 951545 • Los Angeles, CA 90095-1545 • (310) 825-7403

www.bunche.ucla.edu
www.facebook.com/BuncheCenter.UCLA
www.youtube.com/user/uclabunchecenter

Programs & Events (Continued)



Thursday, October 20, 2011, 12:00pm
Bunche Center Authors' Series
Haines Hall 135, UCLA

The Bunche Center Authors' Series features UCLA alum and Los Angeles journalist **Erin Aubry Kaplan**, discussing her new book ***Black Talk, Blue Thoughts, and Walking the Color Line: Dispatches From a Black Journalista***.

The book comes from the Northeastern Library of Black Literature, a book series edited for the past 29 years by Kaplan's mentor, **Richard Yarborough**, a UCLA associate professor of English and former director of the Bunche Center.

Awards and Accolades



Congratulations to Bunche Center affiliated faculty, **Dr. Jo Ann Dawson**, who serves as **Executive Director of UCLA's Arthur Ashe Student Health and Wellness Center**.

The Center was **ranked first in the nation for providing student health services** by the 20th edition of Princeton Review's "The Best 376 Colleges."

The rankings are based on a survey of 122,000 students across the nation. The Center received a 94% satisfactory rating from UCLA students.



Congratulations to **Chandra L. Ford**, an assistant professor in the Department of Community Health Sciences at UCLA and Bunche Center affiliated faculty, for her **opinion piece in *The New York Times*** on how to close the race gap in HIV and ways that public officials could fight the spread of HIV among young gay black men. To read the article, please visit:

www.nytimes.com/roomfordebate/2011/08/10/fighting-hv-among-young-black-gay-men/empowering-black-leaders-to-fight-hiv

Ralph J. Bunche Center for African American Studies at UCLA

160 Haines Hall, Box 951545 • Los Angeles, CA 90095-1545 • (310) 825-7403

www.bunche.ucla.edu
www.facebook.com/BuncheCenter.UCLA
www.youtube.com/user/uclabunchecenter

Awards and Accolades (Continued)



Dr. Edmond Hewlett, Professor, Division of Restorative Dentistry and Bunche Center affiliated faculty, has been appointed the new **Associate Dean of Outreach and Diversity**.

In his new role, Dr. Hewlett will oversee the school's pipeline projects, continue to foster and strive for increased diversity among the faculty, staff and student body, and participate in community outreach on issues involving diversity.

A faculty member since 1982, Dr. Hewlett previously served the school as chair of the Division of Restorative Dentistry and is widely acknowledged for his excellence as a teacher--multiple classes have named him Professor of the Year.

Dr. Hewlett is also an alumnus of the UCLA predoctoral program and postgraduate training program in Advanced Prosthodontics. The Bunche Center congratulates Dr. Hewlett on his new appointment.



We are pleased to announce the publication of ***The Marcus Garvey and Universal Negro Improvement Association Papers: The Caribbean Diaspora 1910–1920*** by **Robert Hill**, Professor Emeritus, History, at UCLA and Bunche Center affiliated faculty.

Published September 6th by Duke University Press, the book and Dr. Hill were recently highlighted in an article in UCLA Today.

To read the article, please visit:

<http://newsroom.ucla.edu/portal/ucla/garvey-movement-owes-debt-to-caribbean-211486.aspx>

Ralph J. Bunche Center for African American Studies at UCLA

160 Haines Hall, Box 951545 • Los Angeles, CA 90095-1545 • (310) 825-7403

www.bunche.ucla.edu
www.facebook.com/BuncheCenter.UCLA
www.youtube.com/user/uclabunchecenter

Off-Campus Opportunities

THE 19TH ANNUAL
 **PAN AFRICAN**
FILM FESTIVAL
FEBRUARY 16-23, 2011

Now through October 31, 2011

Call for Submissions

The Pan African Film Festival

The Pan African Film Festival (PAFF). PAFF will be held on February 9-20, 2012 in Los Angeles. The film festival is the nation's largest and most prestigious Black film festival. Currently, PAFF is accepting submissions of independent features, shorts, narratives and documentary films made by or about people of African descent. Applications are available via the PAFF website at www.paff.org, by emailing ao@paff.org or calling (310) 337-4737.

Eligibility: The PAFF is currently accepting applications for films and videos made by and/or about people of African descent. (Please note: the filmmaker(s) need not be of African descent.) Films should preferably depict positive and realistic images and can be of any genre -- drama, comedy, horror, adventure, animation, romance, science fiction, experimental, etc. PAFF accepts features and shorts both narrative and documentary. The film festival will accept submissions of works in progress; however, films and videos must be completed no later than December 31, 2011.

Submissions will be accepted now through October 31, 2011. Late submissions will be accepted until December 1, 2011. For information visit www.paff.org or call 310-337-4737.

Sony Pictures Entertainment is kicking off the recruitment season for their **Spectrum Internship Program**- winter/spring 2012 session. Sony will be hosting interns in areas such as Finance/Accounting, Marketing/Sales, Legal, Technical, Production, Corporate, etc. Internships throughout the academic year are 15-weeks long. The winter/ spring session starts in late January and ends early May. Sony asks that all interns commit to approximately 20 hours a week. **All internships are paid.** Students will gain insight into the inner workings of the business and the dynamics of the entertainment industry, participate in projects, and learn about the business through events and activities.

Sony will interview interested applicants during on-campus interviews on Thursday October 6, 2011. Any students wanting to apply directly to the career site can apply online at www.sonypicscareers.com.

Ralph J. Bunche Center for African American Studies at UCLA

160 Haines Hall, Box 951545 • Los Angeles, CA 90095-1545 • (310) 825-7403

www.bunche.ucla.edu
www.facebook.com/BuncheCenter.UCLA
www.youtube.com/user/uclabunchecenter

Support the Bunche Center



The Impact of Philanthropy Ralph J. Bunche Center for African American Studies at UCLA

Gifts to the Bunche Center support our commitment to teaching, research, and service, ensuring that a UCLA education remains accessible and that the caliber of its scholarship and research is peer to none.

Private philanthropy at UCLA:

- * Inspires scholars
- * Spurs research
- * Energizes students
- * Entices world-class faculty, and
- * Opens the doors of academic opportunity and exploration

There are several ways to support the Bunche Center, including Estate Planning. In writing a will or living trust, donors can specify that they would like their estate to benefit the Bunche Center at UCLA.

Donors who wish to have their gifts managed by The UCLA Foundation must specifically state in their wills or living trusts that their gifts be made to The UCLA Foundation in support of the Bunche Center.

For information on how to include the Bunche Center at UCLA in your estate plans, please contact Sabrina Burris, Director of Development at 310-206-9173 or sburris@support.ucla.edu.

To learn more about ways to support the Bunche Center, please visit:

<https://giving.ucla.edu/Standard/NetDonate.aspx?SiteNum=55>

Ralph J. Bunche Center for African American Studies at UCLA
160 Haines Hall, Box 951545 • Los Angeles, CA 90095-1545 • (310) 825-7403

www.bunche.ucla.edu
www.facebook.com/BuncheCenter.UCLA
www.youtube.com/user/uclabunchecenter

Library & Media Center



The Library is **now open** during regular hours to students, researchers, and the general public. Research and reference questions by phone and email are always welcome. The Librarian can be reached at 310-825-6060 or by email at

dhunter@bunche.ucla.edu.

The LMC, located in 135 Haines Hall. For more about the library visit: www.bunche.ucla.edu, click on Library and Media Center.

Research



**2011 SHI Cohort
with SHI Mentors**

Summer Humanities Institute

In August, the Bunche Center's **Summer Humanities Institute (SHI)**, funded through a generous grant from the Andrew W. Mellon Foundation, concluded the 11th year of the program. SHI prepares traditionally underrepresented students from Historically Black Colleges and Universities (HBCUs) and others with a commitment to advancing scholarship in African American studies, to successfully complete a graduate program in the humanities and humanistic social sciences.

The 2011 cohort hailed from nine different colleges and universities including: Claflin University, Lane College, Bennett College, Spelman College, Lincoln University, Grinnell College, Cheyney University, Tennessee State University and Hampton University.

Students from the 2011 cohort had the following comments about the program:

"I got a lot out of SHI. I am now a much better writer, a much better researcher, and a much better presenter. SHI made pursuing a PhD more attainable"

Isaiah Iboko, Grinnell University

Ralph J. Bunche Center for African American Studies at UCLA

160 Haines Hall, Box 951545 • Los Angeles, CA 90095-1545 • (310) 825-7403

www.bunche.ucla.edu
www.facebook.com/BuncheCenter.UCLA
www.youtube.com/user/uclabunchecenter

Research (Continued)

“SHI made me more confident that I can perform on a graduate level.”

Brittany Hull,
Lincoln University of Pennsylvania

“I would most definitely recommend this program to anyone who would like to face new challenges and overcome them.”

Lakia Marion, Lane College

“SHI gave me insight into the nature of the graduate classroom through the seminars we attended...I grew as a person in this program.”

Danielle Perry, Cheyney University

“I enjoyed networking with black professors and students on campus.”

Aziza Harding, Bennett College

“This program prepared us to go into graduate school!”

Rochelle Sample, Hampton University

To learn more about SHI visit us on Facebook at:
www.facebook.com/BuncheCenter.SHI.



SHI 2011 cohort and instructor Dr. Jimenez y West on Black Los Angeles history field study course

Ralph J. Bunche Center for African American Studies at UCLA
160 Haines Hall, Box 951545 • Los Angeles, CA 90095-1545 • (310) 825-7403

www.bunche.ucla.edu
www.facebook.com/BuncheCenter.UCLA
www.youtube.com/user/uclabunchecenter

In the Community OCTOBER EVENTS



Now through February 2012
The African Diaspora in the Art of Miguel Covarrubias
California African American Museum

This CAAM organized exhibition thoroughly explores the **representations of people of African descent** in the work of Mexican artist Miguel Covarrubias (1904 – 1957). Covarrubias moved to NYC at 19 and became friends with the intellectuals of the Harlem Renaissance. His drawings and caricatures were featured in *Vanity Fair* and *Fortune* magazines. In 1927 he illustrated *Negro Drawings*, which presented a dignified image of African Americans to mainstream America. This exhibition places his art within a historical context and analyzes his works as part of a broader representation of people of color.

CAAM
600 State Drive, Los Angeles, 90037
213-744.2024 /www.caamuseum.org



October 2 – 3, 2011
Annual J.U.i.C.E. Hip Hop Dance Festival
Ford Theatre

This year, J.U.i.C.E. celebrates 10 years of empowering and educating youth through the hip hop arts at their weekly program by inviting international performers to the **3rd Annual J.U.i.C.E. HIP HOP**. For more information visit:

www.leimertparkbeat.com/events/3rd-annual-juice-hip-hop-dance.

Ralph J. Bunche Center for African American Studies at UCLA
160 Haines Hall, Box 951545 • Los Angeles, CA 90095-1545 • (310) 825-7403

www.bunche.ucla.edu
www.facebook.com/BuncheCenter.UCLA
www.youtube.com/user/uclabunchecenter

In the Community

OCTOBER EVENTS (Continued)



October 2 – 9, 2011

Angel City Jazz Festival

Various locations including: John Anson Ford, REDCAT, Royal T, LACMA's Bing Theater, Barnsdall Gallery Theater, Musicians Institute Theater

LA's only **jazz and new music festival** is back. Original and innovative jazz musicians from the West Coast and around the world will hit the stages for a weeklong celebration. The event takes place at six venues and combines music, film, art, dance and food. It will also feature two world premieres. For more information contact: info@angelcityjazz.com.



October 5 2011, 7:00pm

Twenty Twenty
Hammer Museum
UCLA

Roger Guenveur Smith and **Marc Anthony Thompson** premiere **Twenty Twenty**, their new multimedia performance about black music created and fostered in L.A. from 1960 to 1980. Smith and Thompson are your sonic tour guides through this impressionistic survey of distinctive music that includes Odetta's spirituals, free jazz, psychedelic rock and the funky soul of the Brothers Johnson.

All Hammer public programs are free. Seating is on a first come, first served basis. Hammer members receive priority seating, subject to availability. Reservations not accepted, RSVPs not required. Parking is available under the museum for \$3 after 6:00pm.

Ralph J. Bunche Center for African American Studies at UCLA

160 Haines Hall, Box 951545 • Los Angeles, CA 90095-1545 • (310) 825-7403

www.bunche.ucla.edu
www.facebook.com/BuncheCenter.UCLA
www.youtube.com/user/uclabunchecenter

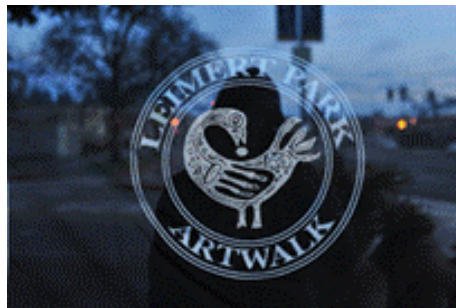
In the Community

OCTOBER EVENTS (Continued)



Weekends of October 6, 13 and 20th
Catalina Island Jazztrax Festival
Catalina Island

One of the nation's best **jazz festivals** on Avalon, Catalina Island.
For more information visit: www.jazztrax.com.



October 30, 2011 at 8pm
Leimert Park Art Walk
Leimert Park Village

The Leimert Park **Art walk** is a free self-guided art and community experience bringing visual and performance art to currently unoccupied space in Leimert Park Village.

Held the last Sunday of each month, the Leimert Park Art Walk was born from the desire of the local arts community to revive the art scene and to encourage traffic to this historic and vibrant neighborhood. Enjoy DJs spinning, rhymer's rappin' and poets of the spoken word combine with traditional artists and the legendary drum circle. For more information contact:
info@leimertparkartwalk.com.

or visit: www.leimertparkbeat.com/events/leimert-park-art-walk-last-1

Ralph J. Bunche Center for African American Studies at UCLA

160 Haines Hall, Box 951545 • Los Angeles, CA 90095-1545 • (310) 825-7403

www.bunche.ucla.edu
www.facebook.com/BuncheCenter.UCLA
www.youtube.com/user/uclabunchecenter